

Referral

Are you concerned about your infant or toddler's development (birth to 3 years old)? The FIRST STEP is to contact your local school district (see below) and ask for the Early Start Program in your area.

An Early Start Service Coordinator will assist you and your family during the registration process and beyond.

El Segundo Unified SD

310-615-2650 x 235 or 310-615-2676 x 305

Hawthorne

310-675-5936 or 310-615-6269

Hermosa Beach City SD

310-937-5888 x 239

Inglewood Unified SD

310-680-5325 x 7

Lawndale SD

310-973-1300 x 5619

Lennox SD

310-695-4033

Manhattan Beach Unified SD

310-318-7345 x 5967

Palos Verdes Peninsula Unified SD

310-791-5078 x 201

Redondo Beach Unified SD

310-798-8650 x 3231

Torrance Unified SD

310-972-6109

Wiseburn SD

310-725-4757

Southwest SELPA / Family Resource Center

310-944-3217 x. 248

Southwest SELPA

Mary Ring, Director

Jennifer Fisher, Early Start Program Specialist

310-944-3217 ext. 247

Christy Cole, FRC Parent Support Coordinator

310-944-3217 ext. 248

FIRST STEPS serves these school districts:

El Segundo USD

Hawthorne SD

Hermosa Beach City SD

Inglewood USD

Lawndale SD

Lennox SD

Manhattan Beach USD

Palos Verdes Peninsula USD

Redondo Beach USD

Torrance USD

Wiseburn SD



FIRST STEPS for infants and toddlers is a cooperative program with the Los Angeles County Office of Education, the Southwest SELPA and the California Department of Education—Early Start Program

FIRST

Supporting

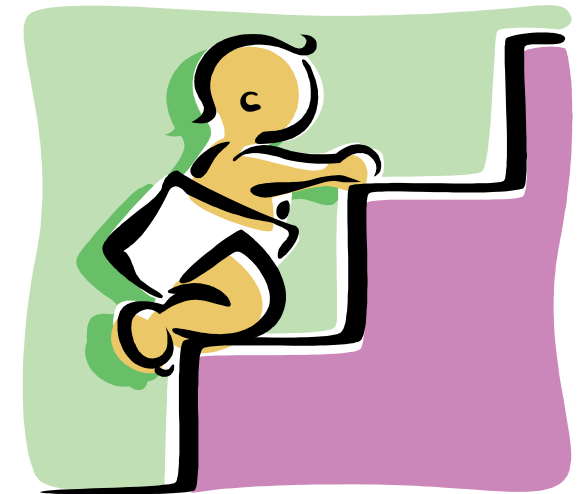
Toddlers (Infants & families) with

Education

Play &

Services

& Beyond ...



Jennifer Strutzenberg, Teacher
Jefferson School
1820 Havemeyer Lane
Redondo Beach, California 90278
310-376-7922, Ext. 1

Kathleen Davis, Teacher
Imperial Avenue School
12495 Isis Avenue
Hawthorne, California 90250
310-536-9112, Ext 252

Early Start Intervention

Early Intervention services are available at no cost to families with infants and toddlers who have exceptional needs or who are at-risk for delays in their development.

The Los Angeles County Office of Education FISRT STEPS Program serves infants and toddlers (birth to 3 years) with an orthopedic impairment exclusively or in conjunction with another disability. Specialized and individualized instruction in all areas of development (cognitive, language, gross motor, fine motor, social emotional, and self-help) is provided within the classroom and/or in the home.



Infants birth to 18 months of age are provided services in their home. Infants and toddlers age 18 months to 3 years old may attend a center-based, classroom program in addition to receiving monthly home visits. Frequency of home visits and classroom instruction is based on the child's and family's needs.

Early Start intervention services for each infant and toddler are guided by an Individualized Family Service Plan (IFSP) that is developed by an interdisciplinary team of professionals in collaboration with the parents.

Early intervention has been found to increase the likelihood that children will be better prepared to succeed in their next learning environment.

Early Start Intervention

- ◆ Service Coordination
- ◆ Individualized in-home instruction to assist families incorporate ideas and strategies into their home routines and everyday lives
- ◆ Small-group and individualized classroom instruction for toddlers (18 months to 3 years) with peers
- ◆ Child : adult ratio does not exceed 4 : 1
- ◆ On-going developmental assessment
- ◆ Related services
 - California Children's Services (per eligibility)
 - Physical Therapy (PT)
 - Occupational Therapy (OT)
 - Speech Therapy
 - Nursing
 - Nutrition
 - Psychoeducational Evaluation (at transition)
 - Respite
 - Referral
- ◆ Consultation and collaboration with other agencies
- ◆ Parent support and resources
- ◆ Family Resource Center with a variety of books, videotapes, DVDs, CDs
- ◆ Transition planning and support to the next educational setting



Philosophy

The FIRST STEPS Program makes a promise to children and families – a promise that their strengths will be recognized and built on, that their beliefs and values will be respected, that their choices will be honored, and that their hopes and aspirations will be encouraged and enabled. The FIRST STEPS Program believes that

- ◆ Children learn through play, exploration and multisensory activities.
- ◆ Parents are very important to their child's development and education.
- ◆ Classroom and in-home instruction is developmentally appropriate and uses age-appropriate activities and materials.
- ◆ Parents and teachers collaborate as partners on behalf of the child.
- ◆ Children's self-esteem, confidence and mastery are supported and encouraged through direct teaching, discovery learning and hands-on play experi-

